



... Awareness ... Order ... Creativity ...

## THE WISDOM WAVE NEWSLETTER

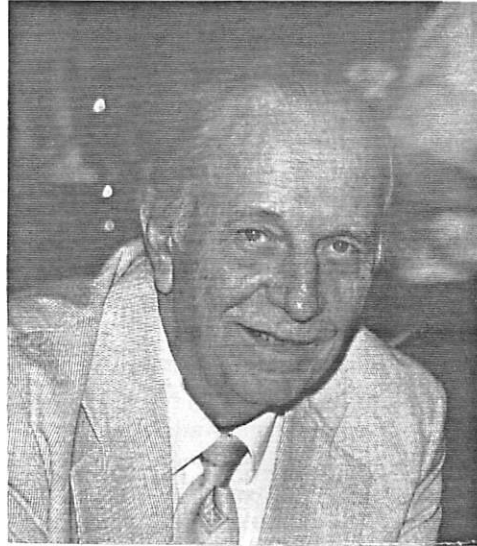
Volume 3 Number 2

September 11, 1992

### **ROBERT ADAIR, BELOVED TRUSTEE PASSED ON**

Robert C. Adair, known to many as Father John, passed away peacefully, with his close friends and family close by, at his home in Coyle, Oklahoma, on April 24, 1992, the Orthodox Holy Friday. With his wife Kay Adair, he was co-founder of St. Francis of the Woods Spiritual Renewal Center. He had served on the WW board for one year and was loved and recognized for his conceptual know how, practical savvy, superior judgment and deep humanity. We cherish his memory and presence at St. Francis and in Santa Fe, holding him eternally in our hearts and minds as the dear and magnanimous spirit that he is. Any person wishing to send condolences or donations to build his memorial in Coyle can write to:

*Robert Adair Memorial Fund  
c/o Kay Adair  
St. Francis of the Woods  
PO Box 400  
Coyle, Oklahoma 73027-0400*



*A recent picture of Bob Adair, Sr. before his death on April 24, 1992. Shyam and Bob worked very closely in spiritual communities, helping people spiritually and materially who are on a real spiritual quest. Photo by Christy Price*

### **SCHEDULES and NEWS:**

Shyam has been traveling a good deal this year, with some unannounced trips so we have not been able to apprise you systematically of his whereabouts. He will be coming to Santa Fe for Christmas. A spring retreat is also a possibility, but the location is not yet determined. Any formal programs will be announced to the members and well wishers on the mailing list. Readers are reminded of Wisdom Wave's weekly gathering and meditation service in Nambe on Sunday nights at 7:00 PM. Shyam spoke at this location during his unannounced visits to Santa Fe in June and September. Please call the Wisdom Wave phone number periodically for news, as we are no longer sending out flyers except for formally scheduled events. The expense and labor was excessive and we still get large groups when Shyam is here, strictly by word of mouth.

WW is exploring the possibility of allowing affiliate groups across the US to join under the 501 (c) 3 status. As you can guess, a good deal of legal paperwork is involved as well as the fee of \$500 to the IRS, so we are proceeding slowly and carefully.

Thanks to the donations of members and well wishers, we have been able to purchase professional quality audio recording equipment which will now enable us to tape programs with high quality. These recordings will still require the time and labor of editing. Previous recordings have been judged as not acceptable for distribution, but they will remain part of the archives for future transcriptions and publications. We hope to be able to edit a beautiful tape this fall. Comprised of Shyam's impromptu Sanskrit hymns sung to his spontaneously improvised music compositions, this music tape promises to be a treasure. Editing and printing will take some time, so please bear with us. All labor for WW is volunteer.



## COMMUNITY AND SPIRITUAL LIFE (continued from Vol. 3. No. 1):

excerpts from a talk on July 15, 1991 by Patricia Brown

The group transmission of magnetic energy and thought forms with the corresponding stimulation of different hormones is powerful. In our physical nature, we are tribal, social animals. In this sense, we are powerfully affected by the people around us. As you grow more sensitive, you begin to notice how a particular environment affects you. Although it is not necessary to preserve yourself in some kind of insulated capsule, you will still want to learn to discriminate and select the most beneficial social surroundings to your well being and growth as a human being. You, nevertheless, have to go out into American society and work and participate in worldly activities to some extent. As you grow more sensitive you notice how these things affect you. You can try out your spiritual muscle and test yourself to see how strong you are in these different environments, especially to see if you can withstand many kinds of influences and not be swayed. It is also important, however, to allow that plant of genuine selfhood and pure being to grow healthy in a nurturing environment. The Sanskrit word Advitya has to do with ignorance. It means that we attach ourselves to evanescent forms of life, and take the evanescent for the real, the true, the blissful. The human race shares a Metempsychosis in this regard. Whatever word we use to describe this distortion, Maya, shared or consensual unreality, we conceive of ourselves as a fragmented physical body in a circumscribed social group. The core of the illusion is our separateness from our Creator and from each other. The identification process continues as we develop towards our identification with ourselves as being blond, or unwrinkled, as unattractive or attractive, as heavy or slim, young or old, smart or stupid, etc. By that identification, we miss our real nature as permanent, eternal being. Particularly in the addictive society in which we live, we are offered incentives to adopt these false images of ourselves in order to gain power and prestige,

security or wealth, influence and stature, or whatever value we hold most dear to that fragmentary identification. We furthermore see another person as being a repository of that quality or qualities. Being constantly bombarded with these things, we can say that ignorance is epidemic. The question then is : how are we going to compose ourselves, and strengthen ourselves enough to see that truth prevails in our lives, to see who and what we really are? How can we truly and deeply come to realize our basic and unalterable ONENESS with each other? How can we know in our hearts that we are basically extensions of each other? The fact is, honestly, that we do not know nor do we act like we know that we are one in the core of our hearts and the center of our convictions. So here we are in this predicament, surrounded by a social environment that encourages image making and image adoption on every level, even within the psychic and spiritual spheres. As you begin to look at what is genuinely essential in your life, for your inner self, you may come to a point along the way when you know you do not want to continue as you have been. You think that perhaps you do not want to go to a certain social function or activity. It is really not a question of abandoning anyone. If someone is permanently in your heart, they will remain there. You'll be there for them in times of genuine need, but maybe you do not want to attend a cocktail party or share a drug with them, maybe you do not even care to spend hours in frivolous conversation. You begin to filter through your activities. This occurs naturally, as you look at yourself, it does not come out of a calculated effort. You see that certain situations accentuate your vulnerabilities and insecurities in the world, and you do not care to indulge in them. A situation may stimulate a need for ego confirmation about some quality when you realize it is not such a fine quality in the first place. You ask why you feel some ways with particular people, and you sort through an entire inventory of your personality traits.

Group energy is very powerful. There is a Seneca Indian saying, *"You have not been blessed until you have been laughed at by the multitude."*

**COMMUNITY AND SPIRITUAL LIFE cont.**

There comes a time when a person has to stand alone. It is an essential part of this growth process. Mectilde de Magdeburg said something similar, *"Undeserved contempt sanctifies all of God's children."* These quotations are by way of saying that you may find, in standing up for your own truth, that others will misinterpret you. The social structure, is oriented toward addiction. There is a tremendous amount of good literature about this now, Anne Wilson Schaef has explored the whole structure of addiction in society. We often identify with someone in our environment who has a certain kind of power we covet. We want to be like that person when it may not be suitable to our nature at all. There is this continual hero projection. It is important, at least, that we chose the right kind of heroes to be around! Ultimately, of course, people have to be their own heroes in terms of their own spiritual lives. In the interest of knowing about how people struggle with these issues, I read constantly about the different saints. There is no escaping the need to find your own personal heroism, your own ability to stand alone and compose yourself, renouncing sometimes what you seem to want so passionately. These qualities seem to be essential in life. Even beyond these is the requirement of one-pointed intensity. So whether your highest value is self-realization, God-realization or truth-peace-or love-realization, *single-mindedness* gives you the power to move through the veil of illusion into the knowledge of your whole being. It gives you the power of honesty, to look at those influences that distract you and detract you from living in the courage of your heart-felt convictions. Yet, even if you associate yourself with an earnest spiritual group, you will find the complexity of personality clashes and misunderstandings, communication problems and periodic feelings of estrangement. It is inevitable because we all carry our problems with us. If everyone is basically sincere, then it is just grist for the mill. Then these complexities can aid your

growth by illuminating work not yet finished, redemption and love to be met. The single relationship we all share is that of Created to Creator, meaning our kinship as children of God. When a group returns to that single claim, the sincerity of the people can equalize and unify us into that single, worshipful contact between Created and Creator. If that is the one touchstone to which everything is referred, things can be set aright. This touchstone is one's primal and worshipful relationship with God., therefore Jesus said, *"Seek first the Kingdom of God, and all else will be added unto you."* Understanding this you can always turn to yourself, referring everything back to that touchstone, you and your Creator, you and whatever is hidden behind the veil in yourself. Most often, we have to decondition ourselves away from thinking that our parents and authority figures are identical with the Creator. From childhood, we think that our parents are God, we identify with them as this image of God. Pretty soon we are totally confused. We have to return to that time in childhood when it was simply "You and me, God." When God was an ineffable that could not be summed up in a label or image. Miester Eckart would say that God is always holding out some lure, that he was thankful not because God loves him, but that God could not stop loving him. There is always that calling, that voice pulling us back to our heart, our core. This relationship with God is primal and worshipful, and also mutual. We

ask how that can be, I'm just a created being, identified with this body. The great mystics and saints of humanity have realized that, "I mean as much to God as God does to me." They all seem to hold some inner knowing of their intrinsic value to the cosmos, to the Creator. Ramakrishna said that the devotee is the sweetness and God is the enjoyer, the devotee is the lotus and God is the bee, that *"God has divided into two in order to enjoy His own bliss."* This relationship with God is also sacrificial. Most of us have

our soliloquies, why can't I do this, have that? If you are struggling, like most people, you will ask God, why am I going through this pain? All

***"....A Seneca Indian saying is ' You have not been blessed until you have been laughed at by the multitude'...."***

**COMMUNITY AND SPIRITUAL LIFE cont.**

the great beings on this planet come to this humble relationship with God, "all right whatever You ask," folding one's wings and listening in the loving, sacrificial attitude of surrender. St. Theresa used to say in her moments of great ecstasy, *"let me keep giving and giving myself to you in eternal giving..."* This sacrificial love of surrender seems to bring a person to that point of blissful loving. This worshipful, primal, mutual and sacrificial relationship to the Creator is the touchstone of community. If the people in your closest spiritual group are earnestly in touch with this relationship, then the community will be able to generate a sacred circle of protection to everyone in the group. As the Bhagavad Gita said, *"even a little practice of this will save a person from dire calamity and great catastrophe."* In these matters, it is best not to judge, for no one knows the extent of karma deserved as compared to what is received unless you see into the center of what you are working out. Being allowed to see and to understand these matters is itself a gift of grace. Nevertheless, the group protection will carry you, with forgiveness and dispassion. You will notice if you leave for a while, that you miss that contact, that your thoughts and strength of resolve were assisted by the group being able to cradle your spiritual growth. It can strengthen your resolve and devotion through shared inspiration and dedication. In the same way, but even more so, you may notice how you feel when you do not allow time to commune with the One. Following this principle of SATSANG, or the association of truth seekers, one day you will realize that everyone is your father, your mother, your brother, your sister, your child, your friend. Everyone is an extension of yourself and a delight to behold.

© 1991 WISDOM WAVE

**ANNOUNCEMENTS:**

**PUBLICATION OF BEAUTIFUL NATURAL  
FOODS COOKBOOK BY BOARD MEMBER  
LYNN WALTERS**

One of our trustees, Lynn Walters, the proprietor of the Natural Cafe in Santa Fe has written a cookbook published by the Crossing Press. The cookbook is aimed at providing healthy living, transcending the conflicting chemicals that are produced in the human system by eating the wrong food. We wish her all success in her new and appropriate adventure. A mother of two might be as well a mother of all. You can write to Lynn at the cafe, 1494 Cerrillos Road, Santa Fe, New Mexico 87501.

**WW MEMBERS HIT BY HURRICANE  
ANDREW**

WW members are in sympathy with the victims of Andrew in Florida and Louisiana where some of our friends and well-wishers have lost their homes. We hope that the mercy of God will descend upon them with full force and everything will be rebuilt anew in an act of love, peace and renewal.

**MEMBERSHIP**

*If you wish to become a member of WISDOM WAVE and have not done so, please send the attached form and a \$25 contribution to:*

WISDOM WAVE  
PO BOX 3558  
SANTA FE, NEW MEXICO 87501-0558  
Phone number is (505) 455 2268

*Further information will be mailed upon your request. We are a non-profit corporation approved by the US. Internal Revenue Service as a 501 (c) (3) organization. Your donations are tax deductible.*

**IF YOU WISH TO KEEP RECEIVING THIS  
NEWSLETTER, and have not done so, PLEASE  
SEND A DONATION. THANK YOU!**